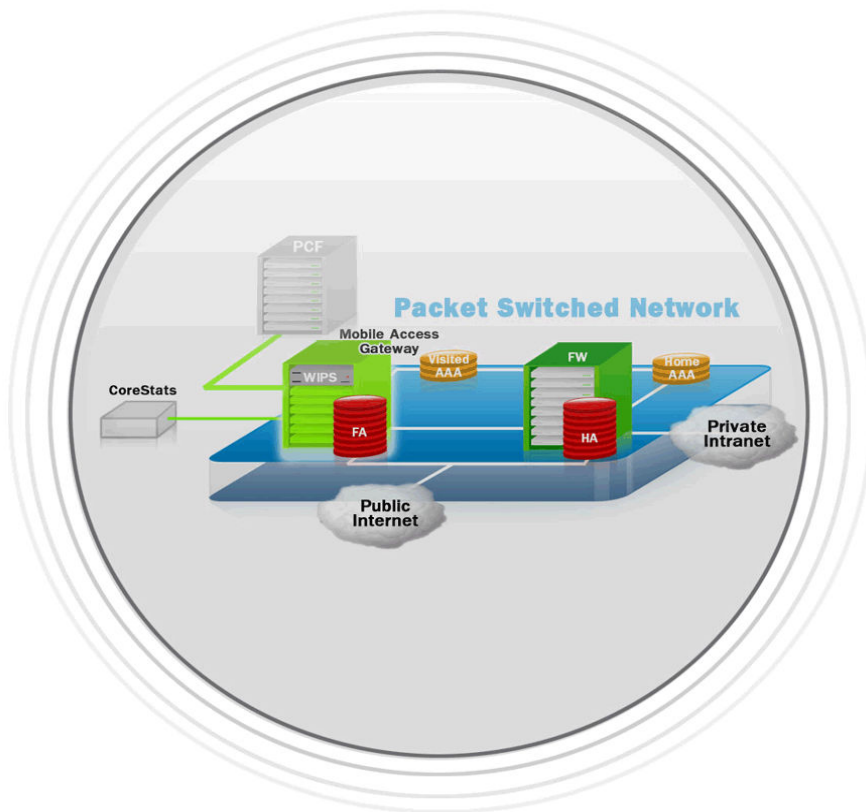


2007



iNet Enterprise Features Fact Sheet



iNetmon Sdn. Bhd.

1010 & 1011, Tingkat 10 Blok D, Dataran Usahawan
Kelana, 17, Jalan SS 7/26, Kelana Jaya, 47301
Petaling Jaya, Selangor Darul Ehsan

Tel: 603-7880 0411
Fax: 603-7803 5062

Features

1. **Enterprise Passive network monitoring** with zero traffic overhead by capturing traffic at low cost.
2. **Simple to get up and running** into any network topology.
3. **A reliable monitoring tool** provides administrators instant access to the health of their network regardless of their location.
4. **Inspect and monitor your services all the time** – keep an eye on the existing servers and their services and send alerts whenever anything behaves oddly. Moreover it will give you an indication of who is alive in the network, what he is currently doing.
5. **Agentless Enterprise class architecture** no agent software needs to be installed on the machines you wish to monitor. The Network Monitor Engine is multi-threaded and can run 40 checks at a time. This software architecture allows for high reliability and scalability to monitor both large and small networks.
6. **Built in Internet service functions** by providing web monitoring of all websites visited by users, to ensure network policy.
7. **Alert notification** When it detects a failure, alerts will be sent via SMS, email. SMS (text) messages are sent either through an SMS service provider (SMSC), directly through a connected GSM phone/modem.
8. **Top-Down View** provides a high-level view of network segments. Every network engineer needs to know about the network without spending lots of time analyzing the captured data. You can also drill down and see which nodes your top talkers are talking to. What protocols and sub protocols are in use.
9. **Auto-discovery**; the entire network will be passively discovered and grouped into intuitive tables, and monitoring them in real-time
10. **View network status from anywhere in the world** You can check the network status from any location worldwide. The remote web monitor includes two types of web page views: One for a normal viewer and one optimized for viewing from a mobile phone or handheld device such as a BlackBerry or a Palm.

11. **Enterprise advanced network traffic monitoring, analysis and reporting tool.** Where reports can be generated and viewed in HTML and PDF format, the possibility to export it into any other format still exists. The reporting supports the following:
 - i. IPv4 Vs IPv6 Graph.
 - ii. IPv6 Protocol Graph.
 - iii. Application Statistics.
 - iv. Top User Usage.
 - v. Application Protocol Statistics.
 - vi. MPLS statistics.
 - vii. Network Address Book.
 - viii. AI Alarms.
 - ix. IPv4 Protocol Statistics.
 - x. Website Monitoring.
 - xi. Network Utilization.
 - xii. Network Protocol Statistics.
 - xiii. Packet Size Distribution.
 - xiv. MPLS Packet Size Ratio.
 - xv. MPLS Utilization percentage.
 - xvi. Worm Detection Log.

12. **Remotely Captures and analyzes** all traffic transport over both Ethernet and WLAN networks and decodes all major TCP/IP and application protocols.
13. **Expert Network Diagnosis Module;** from the Diagnoses view, you are not only able to see the event count by network layer, but also know event-related information such as source, destination, packet number.
14. **Advanced application analysis** modules that allow you to view the key communication applications.
15. **Advanced filtering module** that allows you to focus on the information that you are looking for.
16. **Advanced Health monitoring modules** to check network health and identify problems in a few simple steps.
17. **Comprehensive statistical report and graphic views** both for realtime and offline analysis.
18. **Enterprise Real-time monitoring and analyzing**
 - a. Monitors and captures packets at wire speed
 - b. Real time display of analyzed data
 - c. Captures all packets transmitted over local host and LAN
 - d. Support Ethernet (10Mbps - 1Gbps) adaptors,
 - e. Support IPv6 Packet capturing and decoding.

19. **Provide a CCTV monitoring Style**, where network divided into segments and each segment equipped with iNet Segment monitoring engine the keep an eye on this particular segments for later referring and analysis or on the fly monitoring.
20. **Extends the capabilities** of a network administrator from just troubleshooting the network into developing and designing better network topologies for the company.
- 21.
22. **Network Modeling and Trend Analysis using AI Engine** hand in hand with Fuzzy logic techniques for variables not related to time in the network such as the ARP, TCP storm detection.
23. **Matrix view of peer conversations (NETtrace)**, the matrix view allows user to see the peer conversations graphically - a great feature for instant understanding of network traffic among end points that operates into 3 different layer from the OSI layers. With drill down mechanism to focus more into a specific node communication.
24. **Friendly user interface**
 - a. Multiple-views: Nodes, IP address, TCP connection, UDP session, Packets, Web traffic and Transactions
 - b. Supports multiple windows in a project
 - c. It offers advanced visualization, which reduces the complexity of IT management and simplifies problem identification, adaptive configuration to help ensure system availability
25. **“Prevention is better than cure”**: Predict potential problems and take precautionary actions before it actually happens. **Detect All known type of worms** and alert network administrators in case any worm activity inside the network via sms/email.
26. **Cross platform, that can run on any Operating system.**

Other Features

1. Troubleshooting network problems; Test network performance and debugging new applications with network communication involved; Monitoring network traffic for performance, bandwidth usage, and security reasons.
2. Analyzing network traffic to trace specific transactions or find security breaches; Monitor user Internet access, ftp downloads and other transactions to enforce company policies.
3. Generate and view reports in tables and charts on network usage and statistics for network performance review and planning, network auditing and many other purposes.
4. Monitors network traffic coming to and from your computer.
5. Supports IP address translation.
6. Intercepts all packets sent from the monitored network.
7. Dumps the packet contents into file for archiving.
8. **Support for New Protocols:** Monitoring covers next generation network protocols such as IPv6 to ensure coverage at all times.
9. It presents and visualizes network statistics in real time in various intuitively designed charts and reports.